

A photograph of Mount Fuji, a snow-capped volcano, under a clear blue sky. The mountain is the central focus, with its snow-covered slopes and a small peak visible. The sky is a deep blue with some light clouds near the horizon.

Welcome to Yamanashi !

**Yamanashi Prefecture,
Japan's Wine Kingdom and
the Charms of Koshu Wine**

Feb 26th. 2009

Yamanashi Prefectural Government

< Contents >

1. Brief Introduction of Yamanashi

- Location
- The Beauty of Nature
- Local Products

2. Yamanashi Wine

- Japan's Wine Kingdom, Yamanashi
- The History of Japanese Wine
- The Charms of Koshu Wine & Grapes
- Overseas Yamanashi Wine Promotion

3. The Land of Mt. Fuji Yamanashi Hall

- Introduction of "The Yamanashi Hall"

1. Brief Introduction of Yamanashi

1-1. Yamanashi's Location

From: Narita Airport
(By Train) 2hrs 30min
(By Bus) 3hrs 30min

From: Tokyo
(By Train) 1hr 30min
(By Bus) 2hrs



From: Central Japan International Airport
(By Train) 3hrs 30min
(By Bus) 4hrs 30min

1-2. The Beauty of Nature



Mt. Fuji



Spring

Shangri-La



Winter

Snow
Scenery



Autumn

Japanese
Maple Leaves

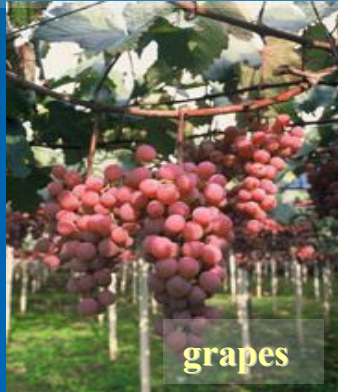


Summer

Sunflowers

1-3. Local Products

Kingdom of Fruits in Japan



grapes



peaches



cherries

Best Wine in Japan



Jewelry Production



gem



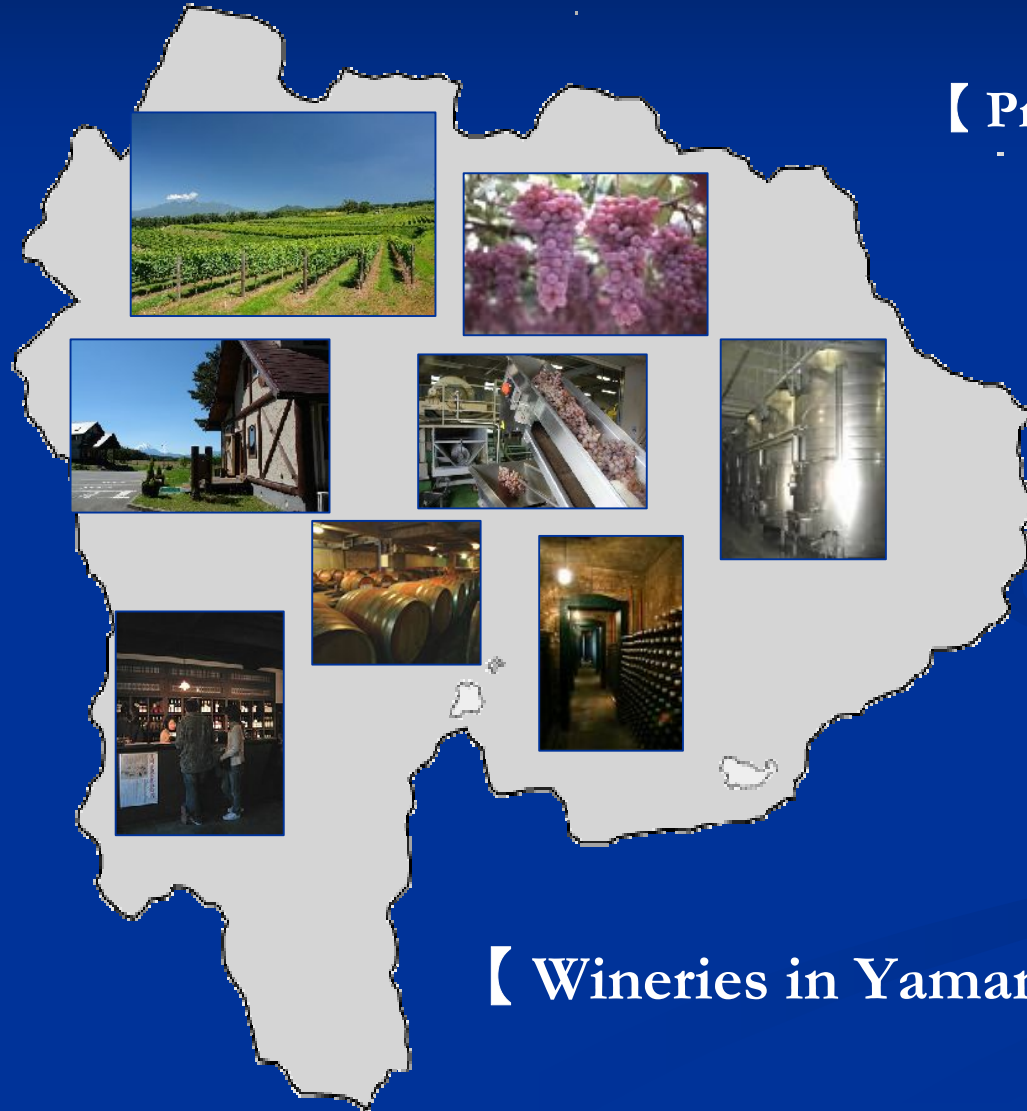
Traditional Products



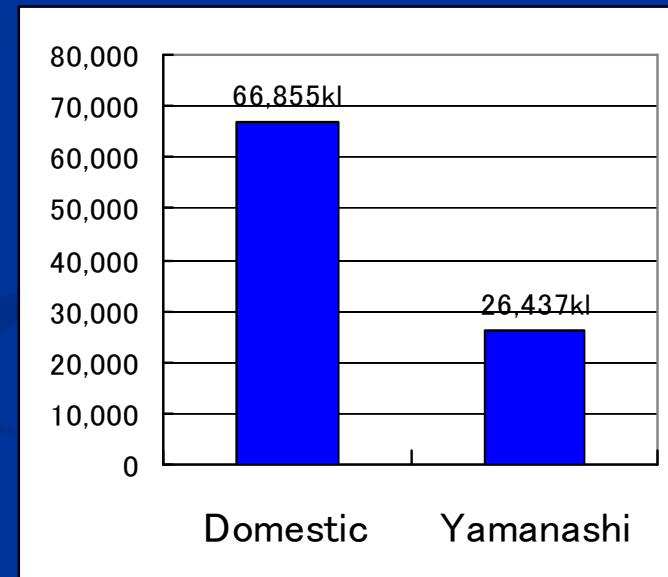
Inden products

2. Yamanashi Wine

2-1. Japan's Biggest Wine Region by production.



【 Production of Yamanashi Wine 】



【 Wineries in Yamanashi 】

2-2. Japanese wine production is said to have started in Yamanashi...



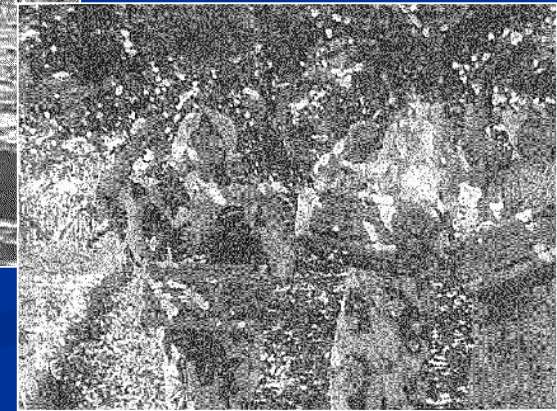
【Masanari Takano & Ryuken Tsuchiya】



【Grapes Conveying Operation】



【Celebratory Parties】



【Harvesting Operation】

2-3. Japanese Original 「Koshu Grapes」&「Koshu Wine」



【 Koshu wine 】

【 Koshu Grapes 】



2-4. Overseas Promotion for 「Koshu Wine」

LONDON
& EU



【 Worldwide Boom in Japanese Cuisine 】

Koshu wine has the distinct flavour that goes well with Japanese cuisine.

3. The Land of Mt. Fuji

Yamanashi Hall

3-1. The Land of Mt. Fuji

“Yamanashi Hall”



【 Yamanashi Prefecture’s local goods and specialties shop in Tokyo 】

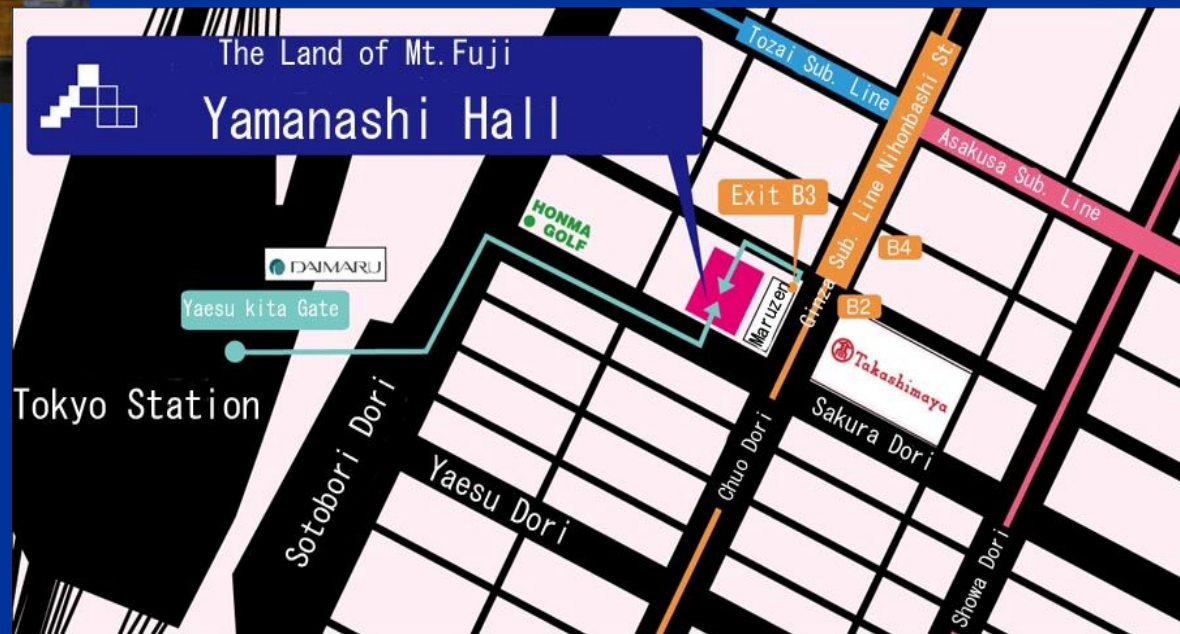
【Location】

2-3-4 Nihonbashi, Chuo Ward, Tokyo

【Access】

From: (Tokyo St.) 4 min walk

(Nihonbashi Sub St): 2 min walk



< **Contacts** >

General Inquiries:

International Affairs Division, Tourism Department

Yamanashi Prefectural Government, Japan

TEL 055-223-1435 FAX 055-223-1438

E-mail: kokusai@pref.yamanashi.lg.jp

Wine Inquiries to Wine products:

Industrial Promotion Division, Commerce Industry

And Labor Department

Yamanashi Prefectural Government, Japan

TEL 055-223-1543 FAX 055-223-1546

E-mail: kougyoshin@pref.yamanashi.lg.jp